

# UNSPPOOL THE DIFF.



Nexans

**MOBIWAY**<sup>®</sup>  
SPEED

Experience the Difference.  
Ask for Mobipay<sup>®</sup> Speed.



## EASY TO CARRY



- Ergonomic handles allow spool to be easily transported
- Safer to carry spool with less risk of injuries
- Prevents spool damage in the event of a fall or drop

## EASY TO PULL



- Plug and play pulling system allows easy installation
- Avoid makeshift methods for spool installation
- Multiple cables can be pulled simultaneously

## STABLE & STACKABLE



- Rubber feet provide ultimate stability and strong grip during pulls
- Stackability enables hassle-free storage
- Keeps your workspace and truck organized and tidy

## MORE WIRE

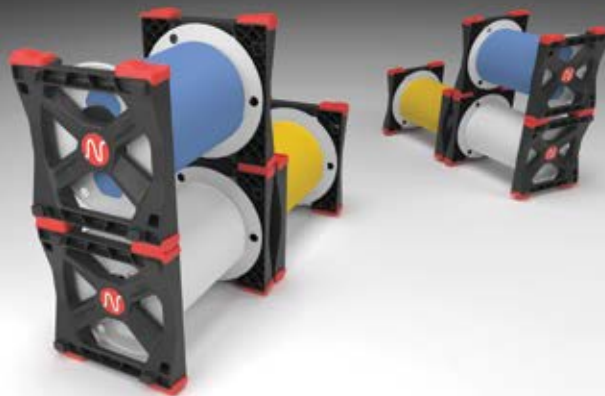


- Get more job out of a spool with 200m wire on 2C14 white and blue
- Reduce handling issues with less spools used per site
- Reduces wire scrap

Available in: **Cable:** NMD90 Canadex<sup>®</sup> | **Sizes:** 2C14, 2C12 & 3C14 AWG | **Colours:** White, Blue & Yellow | **Spool size:** 200m & 150m

Made in Canada.

nexans.ca



## Description



CSA File #LL23462 Class 5821 02

NMD90 Canadex® cable with two copper conductors with 90°C PVC and nylon insulation.

Bare bonding wire and overall jacket of moisture resistant and flame retardant PVC, with FT1 rating.

INSTAGLIDE® LUBRICANT on the wire enables faster installation saving time and money.

### Residential Applications for



- For open or concealed wiring in dry or damp locations where not exposed to mechanical injury.
- Maximum conductor temperature 90°C.
- Approved for use with ceiling fixtures.
- Minimum recommended handling temperature minus 25°C for two conductor cables and minus 10°C for three conductor cables (with suitable handling procedures).

## Contact

### Inside Sales Representatives

Phone: 905.944.4300 or 1.800.668.4585  
buildingwire.canada@nexans.com

## Characteristics

### Construction

Conductor Material	Copper
Insulation	PVC/Nylon

### Electrical

Maximum Operating Voltage	300 V
---------------------------	-------

### Usage

Maximum Operating Temperature	90°C
-------------------------------	------

### Jacket Colours

#14 AWG	White 2 & 3C #14 for General Application
	Blue 2C #14 for Bedroom Outlets terminating at Arc Fault Circuit Interrupters (AFCI)
#12 AWG	Yellow

### Insulation Colours

Two Conductors	Black, White
Three Conductors	Black, Red, White



LEARN MORE